

GRASS MAT SUGGESTED INSTALLATION GUIDE, over the top of existing turf.

FIG: 1

Remove any stones or debris from the area.
We recommend using a rake.

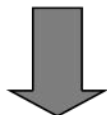


FIG: 2

Layout your mats flush to each other, one row at a time, until the desired area is covered.



FIG: 3

Cable (zip) tie* the mats together on all adjoining edges. As a guide there should be approx., one (1) cable (zip) tie* every 5th hole.



FIG: 4

Fold back perimeter edges of the mats and dig a wedge shaped channel into the soil/surface approx., 4 inches deep.



FIG: 5

Unfold the mats back down and into the channel. Pin each corner into the sloped side of the channel, then refill the channel to bring it level to the surrounding area..



FIG: 6

You now have a solid rectangle of mats secured at all edges. Pin* mats as necessary



* Pins and *Pins and Cable (Zip) ties are not included with the mats, unless ordered*

[g-mail: grassmatsusa@gmail.com](mailto:grassmatsusa@gmail.com)

GRASS MAT SUGGESTED INSTALLATION GUIDE , cut into existing turf.

FIG: 1

Cut area of turf to suit number of mats to be laid.

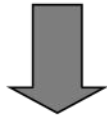


FIG: 2

Clear area of stones and debris. Rake smooth and compact. If necessary place over a layer of sand.

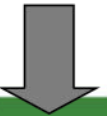


FIG: 3

Lay mat/mats into area, ensuring edges of mat are level with soil level (not top of the grass)



FIG: 4

Lay mats and tie edges if necessary with cable (Zip) ties*. Pin* as necessary

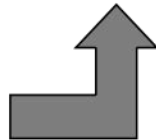


FIG: 5

Fill with mat with soil to suit and seed with grass seed of choice.



FIG: 6

Allow seed to grow, keeping traffic off during the grow in period.



FIG: 7

Once grass has grown in, then mow to suit

□ *Pins and Cable (Zip) ties are not included with the mats, unless ordered*

GRASSMATS (USA) LLC

E-mail: grassmatsusa@gmail.com

Website: www.grassmats-usa.com



GRASSMATS_{USA}

